

# Azure Adoption and Optimisation

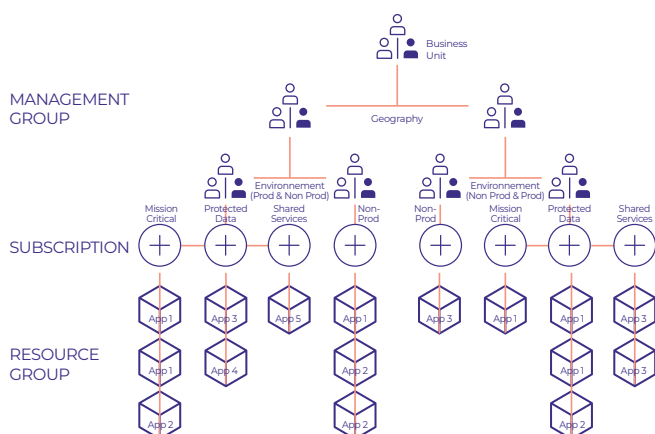
Assess Design Build Migrate Operate

## Abundance of choice requires expert advice

Many organizations that are taking the first steps in Azure, often start off on the wrong foot. It is difficult to grasp the richness of the Azure platform. The platform can cater for very complex organizations. In addition, everything is interrelated: one design decision limits options in another area of attention. Strong expertise in Azure is required in the beginning. Econocom can help with the Azure Adoption Services, focusing on best practices to create an initial Azure environment that can stand the test of time.

In this initial assessment and design phase, the Econocom consultant will in collaboration with your teams:

- **Design resource organization:** Define role-based access control to make sure that users have only the permissions they really need. Define separation of responsibilities per domain (network, system, security), per subscriptions (hub and spoke), per role.



- **Define Manage access:** Define role-based access control to make sure that users have only the permissions they really need. Define separation of responsibilities per domain (network, system, security), per subscriptions (hub and spoke), per role.



*“Our license renewal was coming up. We had a feeling that an optimization was needed, as we were planning to move more workload to Azure”*

- **Recommend Cost Optimizations:**
  - > Predict costs and recommend cost optimizations (reserved instances, auto-shutdown, adjust autoscale)
  - > Recommend cost management policy to track cost across departments, teams, projects, environments
  - > Recommend budget control setup
    - Define consistent tagging standards
    - Define reporting and compliance violation triggers (budget deviations, pace of adoption)
- **Plan for governance, security, and compliance:** Enforce and automate policies and security settings that help you follow applicable legal requirements.
  - > Audit for emerging threats in current Azure deployment
  - > Define and design: asset classification and associated tagging, data encryption, network isolation, firewalling, DDos protection, VPN,
  - > Recommend use of tools such as Azure security center, Network watcher, Azure Vault and Azure AD
  - > Define reporting and compliance violation triggers: increase in attacks, unclassified data detected, security health issue (patch level, AV) detected, network vulnerability detected



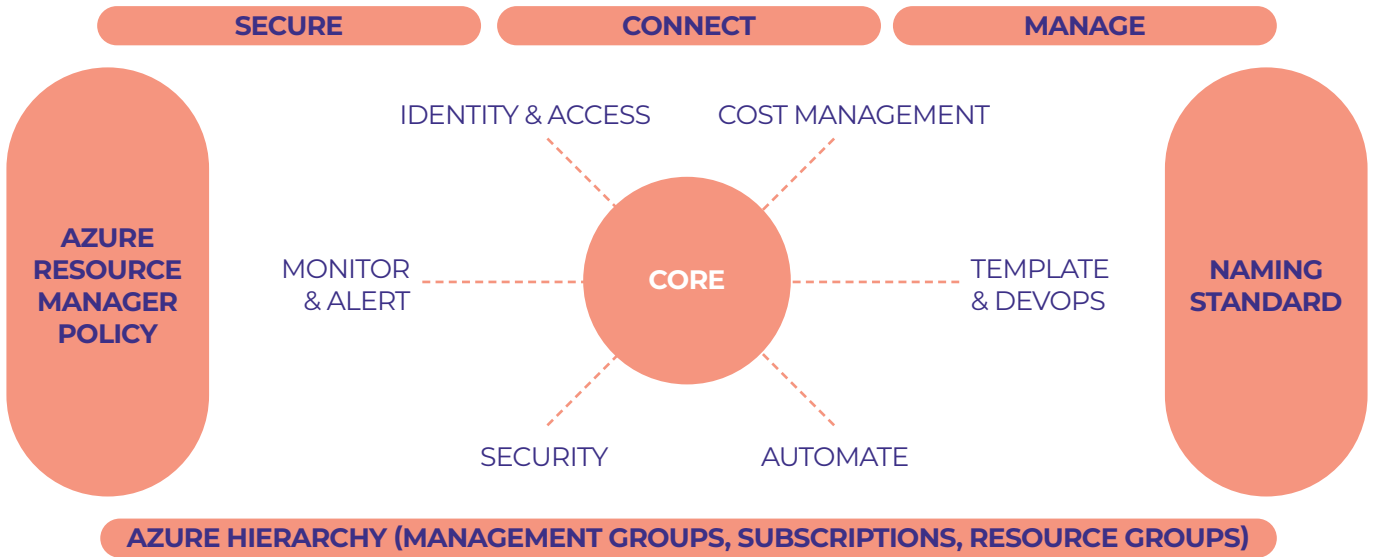
*“We started working with different partners on our Azure platform and we needed to clearly set the boundaries of responsibility”*

- Define monitoring and reporting: Get visibility across resources to find and fix problems, optimize performance, and gain insight into customer behavior.

- > Recommended use of Azure Monitor, Azure Security Center, Azure Service Health
- > Define monitoring for applications, virtual machines, containers, networks



*“We were experiencing difficulties in the allocation of cloud spend to different business units”*



- Define the landing zone architecture
  - > Review compute options (VM, App service, Container, Functions, Service Fabric),
  - > Review networking options (on-premise connectivity, subscriptions connectivity, untrusted network connectivity, DNS),
  - > Review storage options (managed or unmanaged disks, Azure Files, Azure Netapp Files, Data Lake, Blob, ...)

- > Review data options (Azure database services)
- > Backup and disaster recovery (Azure Backup, Veeam, Snapshots, SQL Server always on)
- > Review hybrid cloud consistency (identity, management, data platform)

The above services are part of a modular services offering by Econocom, offering a **structured approach** to support you in your cloud journey.

